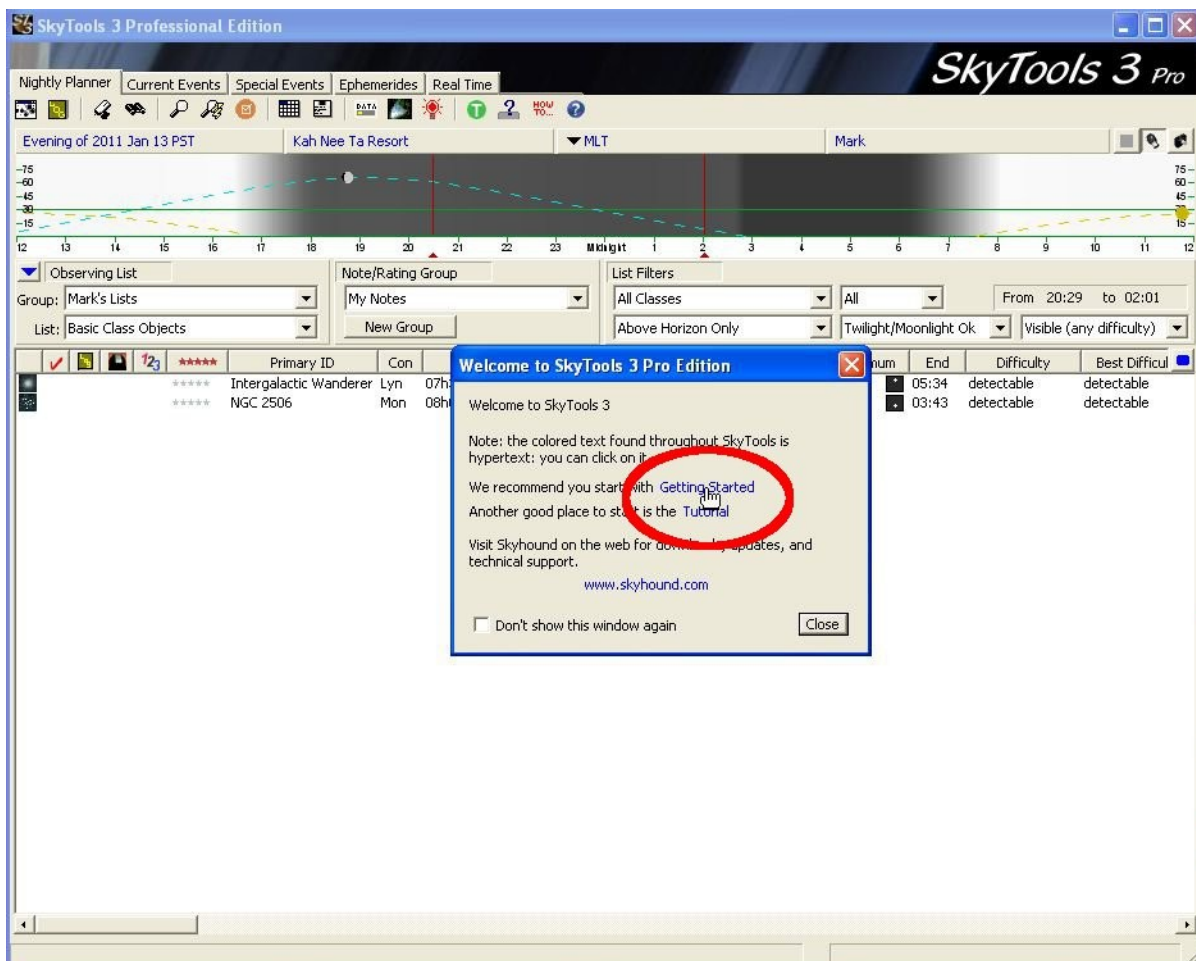


## Pre-Tutorial Checklist

1. Install the SkyTools software. To do this, insert the CD into your CD or DVD drive and follow the instructions. The license code is printed on the CD case. I recommend installing the largest database available for your edition, provided that you have enough space on your hard drive.
2. Click on the “Getting Started” link or the “Tutorial” link, as shown below, and follow the instructions to add the Kah Nee Ta Resort and at least 1 telescope, 2 eyepieces, and 1 observer to SkyTools. The Kah Nee Ta Resort is located at latitude 44° 51’ 33” N and longitude 121° 10’ 49” W at an altitude of 1720 ft. The viewing site, which isn't too far from the resort, is far away from lights and the seeing is usually good to excellent.



3. Download the “list for visual observation” Kah Nee Ta 2011 from the SkyTools page on my web site <http://mark-a-martin.us/skytools/> The list may be directly downloaded using the link

[http://mark-a-martin.us/skytools/Kah\\_Nee\\_Ta\\_2011.stx](http://mark-a-martin.us/skytools/Kah_Nee_Ta_2011.stx)

4. Use the Data Manager in SkyTools to import the observing list. Push the Data Manager button, select the Import Shared Data tab, check the Browse Local/Network Files radio button, and browse to the location where you saved the observing list from Step 3 above. Select the list in the middle pane and import it into the observing list group of your choice.
5. Set the date in SkyTools to April 1, 2011. This date will only persist if you have SkyTools set up to open with the last date used. To choose this setting, push the Preferences button, choose the Preferences tab, and check the radio button “Last date” under “Date to use when nightly planner tab is selected”.